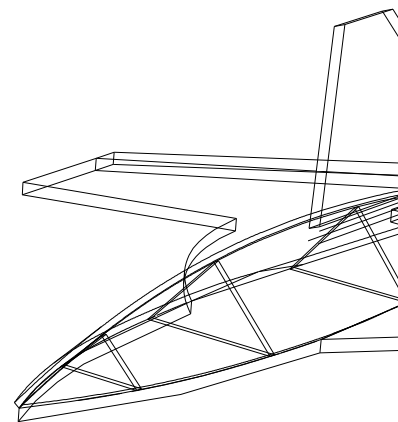
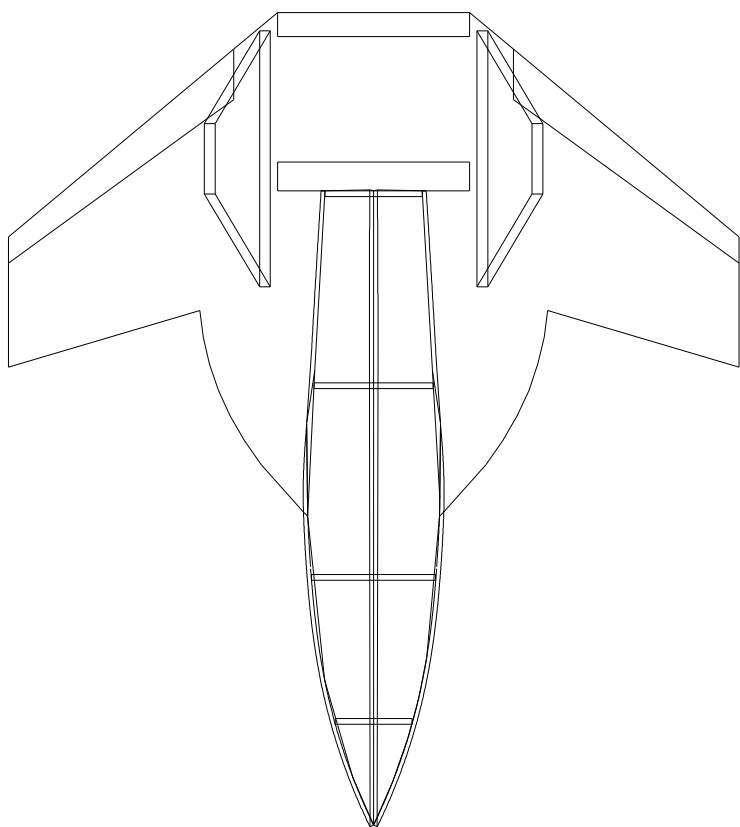
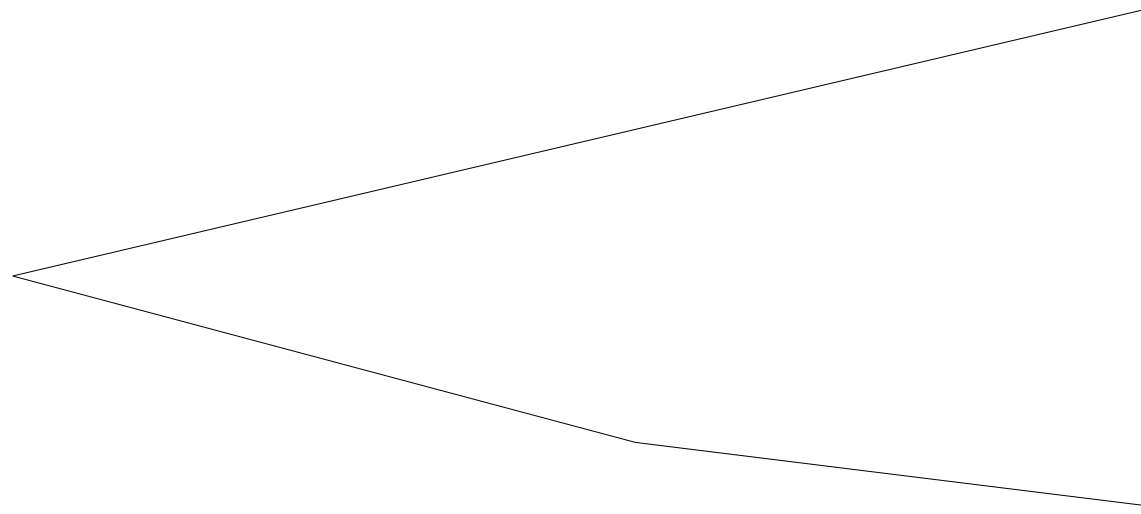
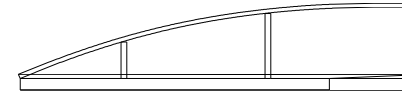
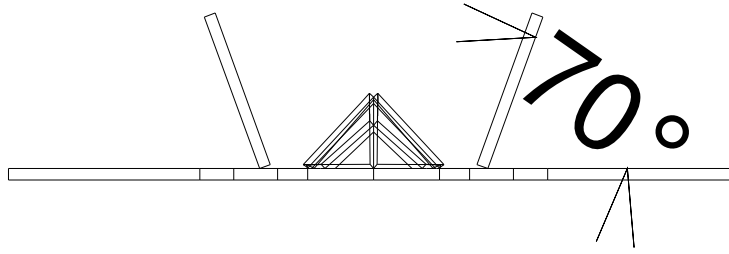
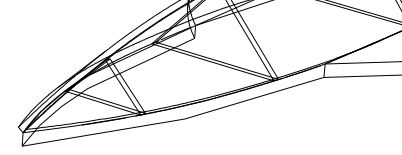
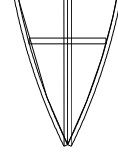




Vertical stabilise







---



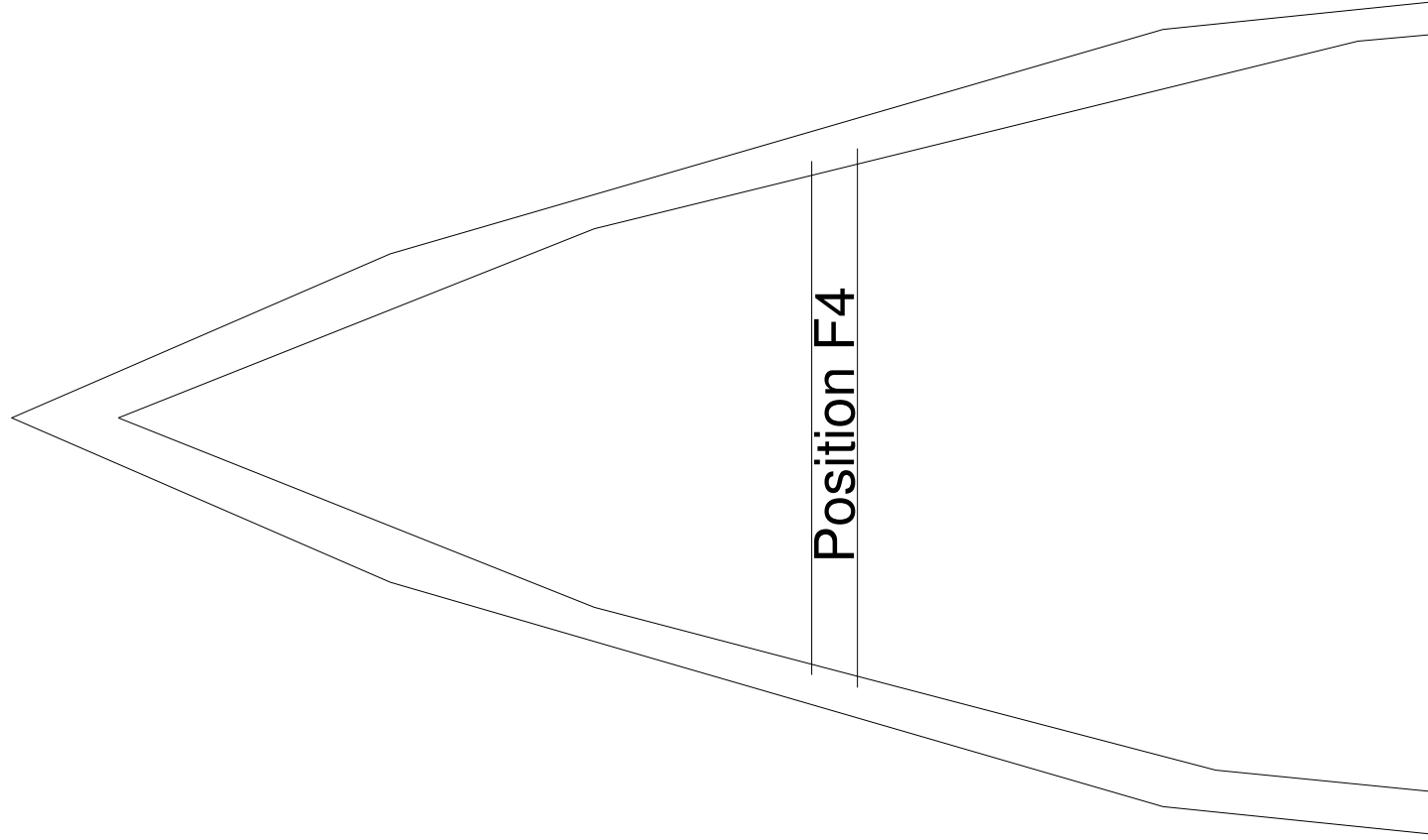
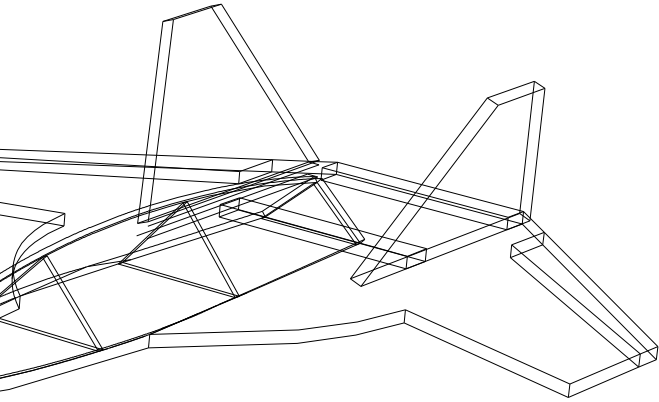
**F4**

A black-outlined equilateral triangle with the text 'F4' centered inside it.

**F3**

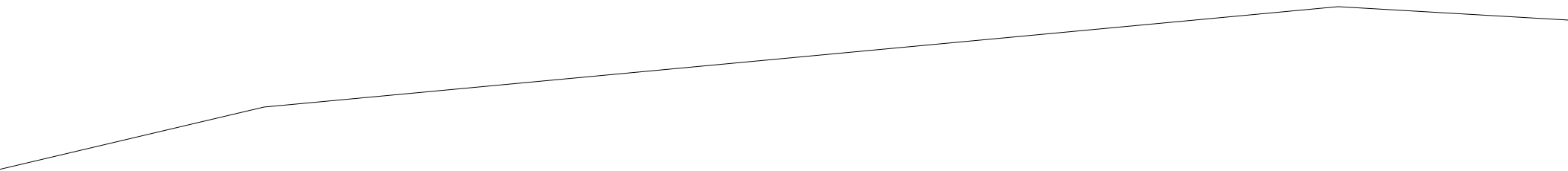
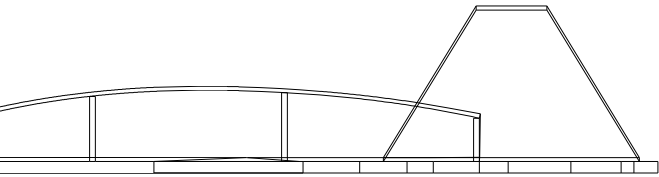
A black-outlined equilateral triangle with the text 'F3' centered inside it.

I stabiliser (2x)

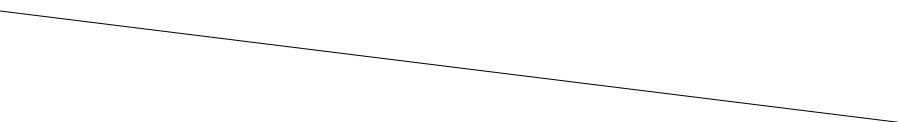


Position F4





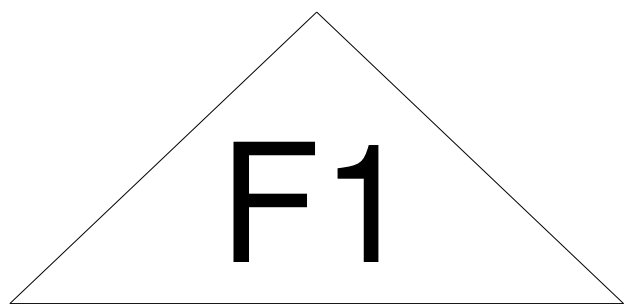
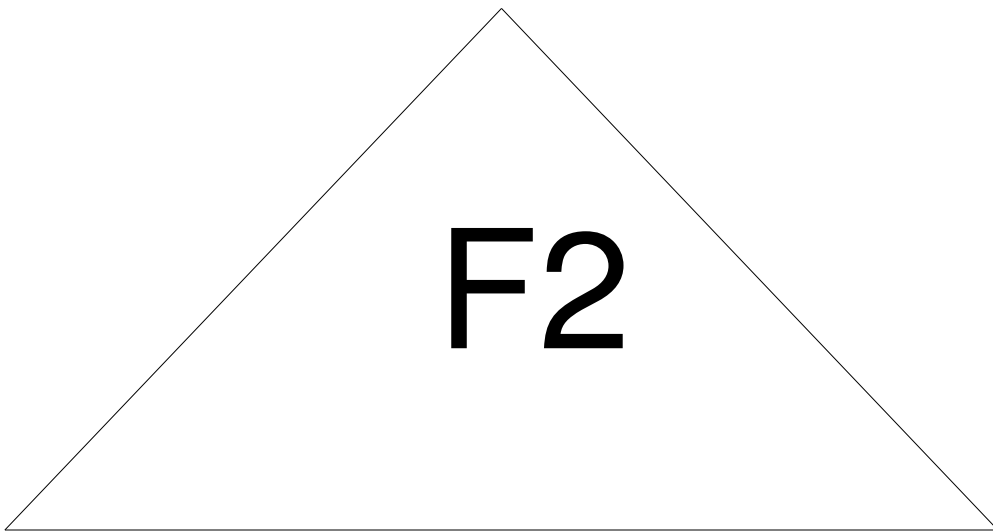
Fuse - 2x 6mm depron



Bottom



Bottom







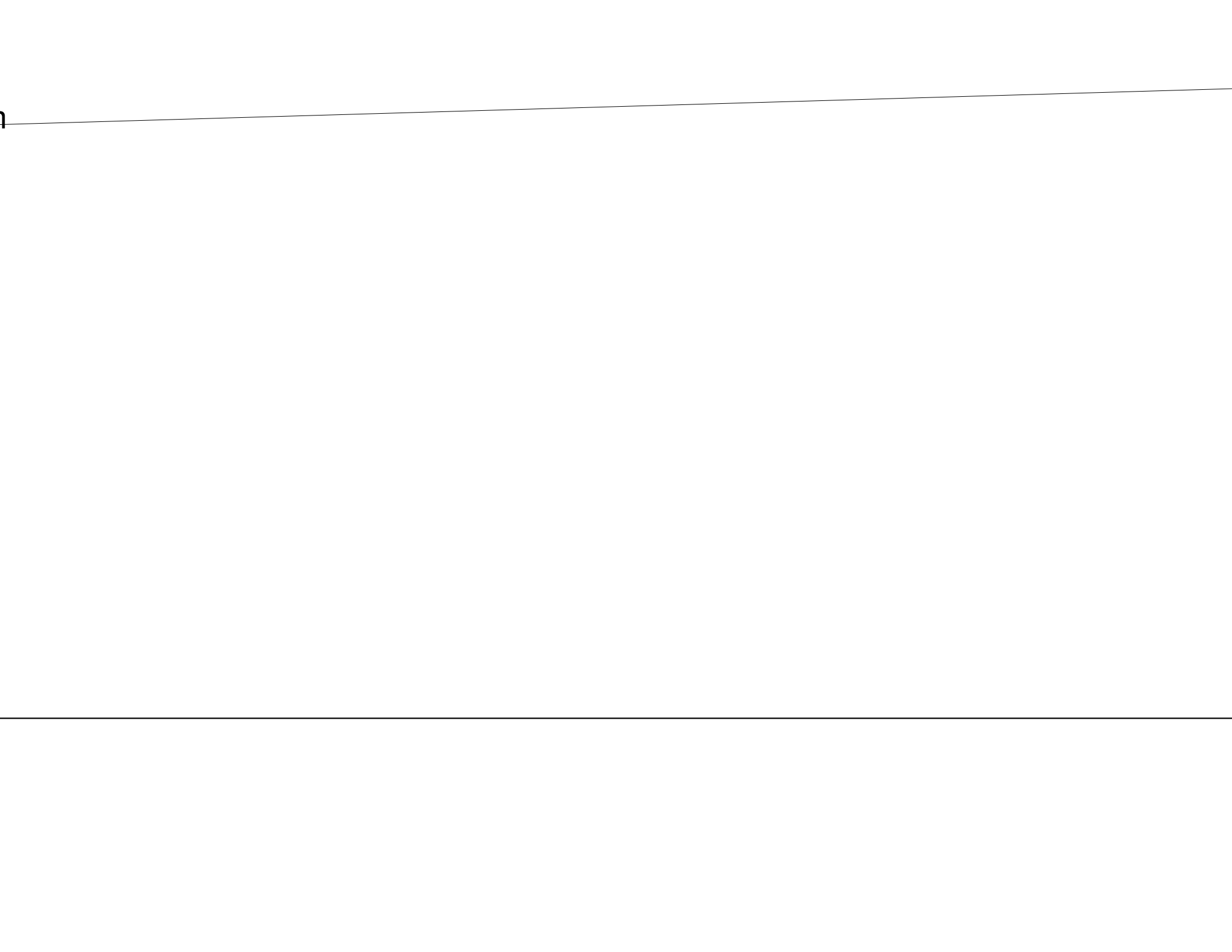
The diagram consists of a large rectangular area defined by a thin black border. Inside this area, there is a vertical line and a horizontal line that intersect at a point. The text "Position F3" is written vertically along the vertical line, centered between the horizontal line and the top edge of the rectangle. The background of the entire image is a light gray color.

Position F3



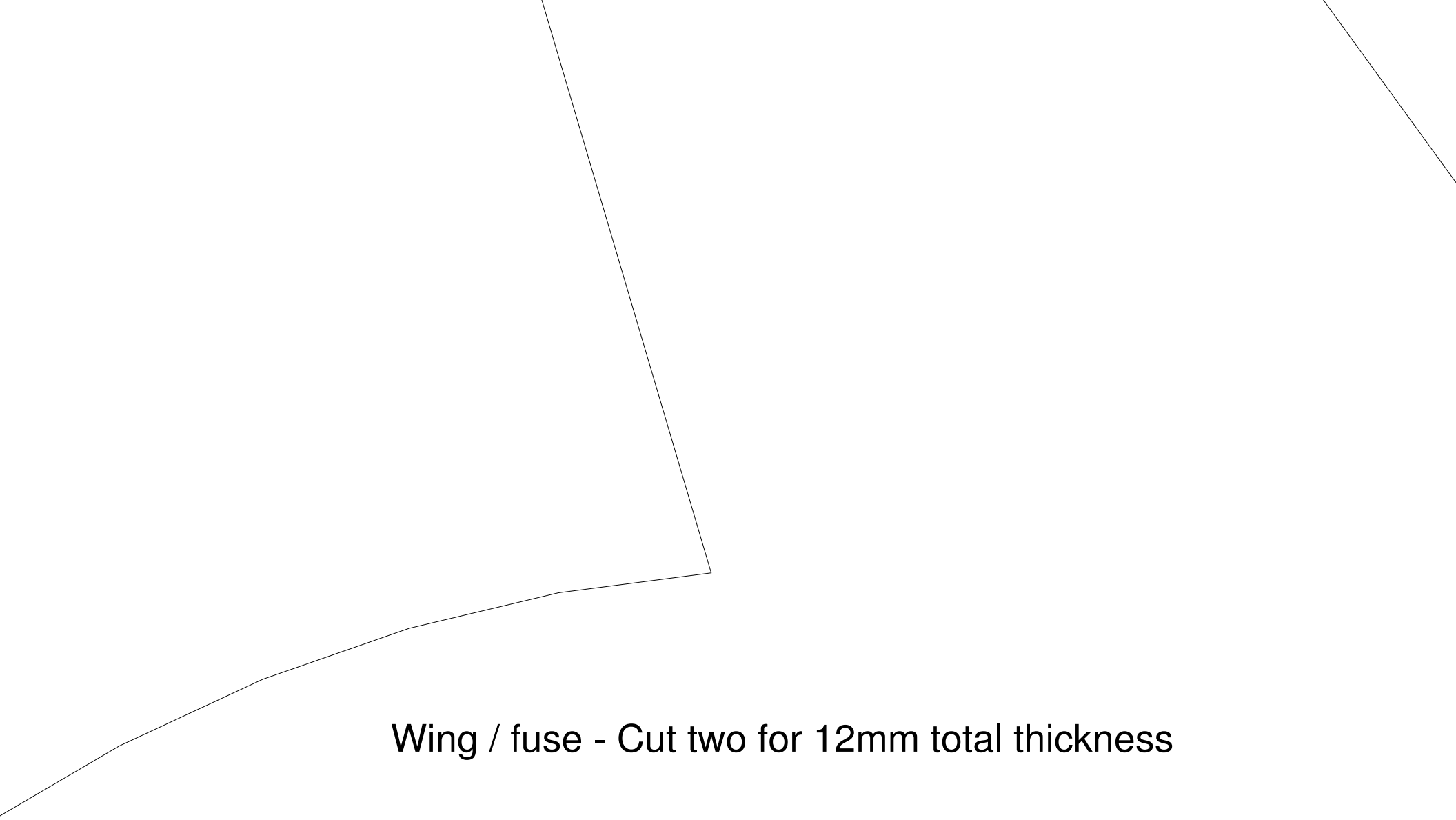
depron

1









Wing / fuse - Cut two for 12mm total thickness

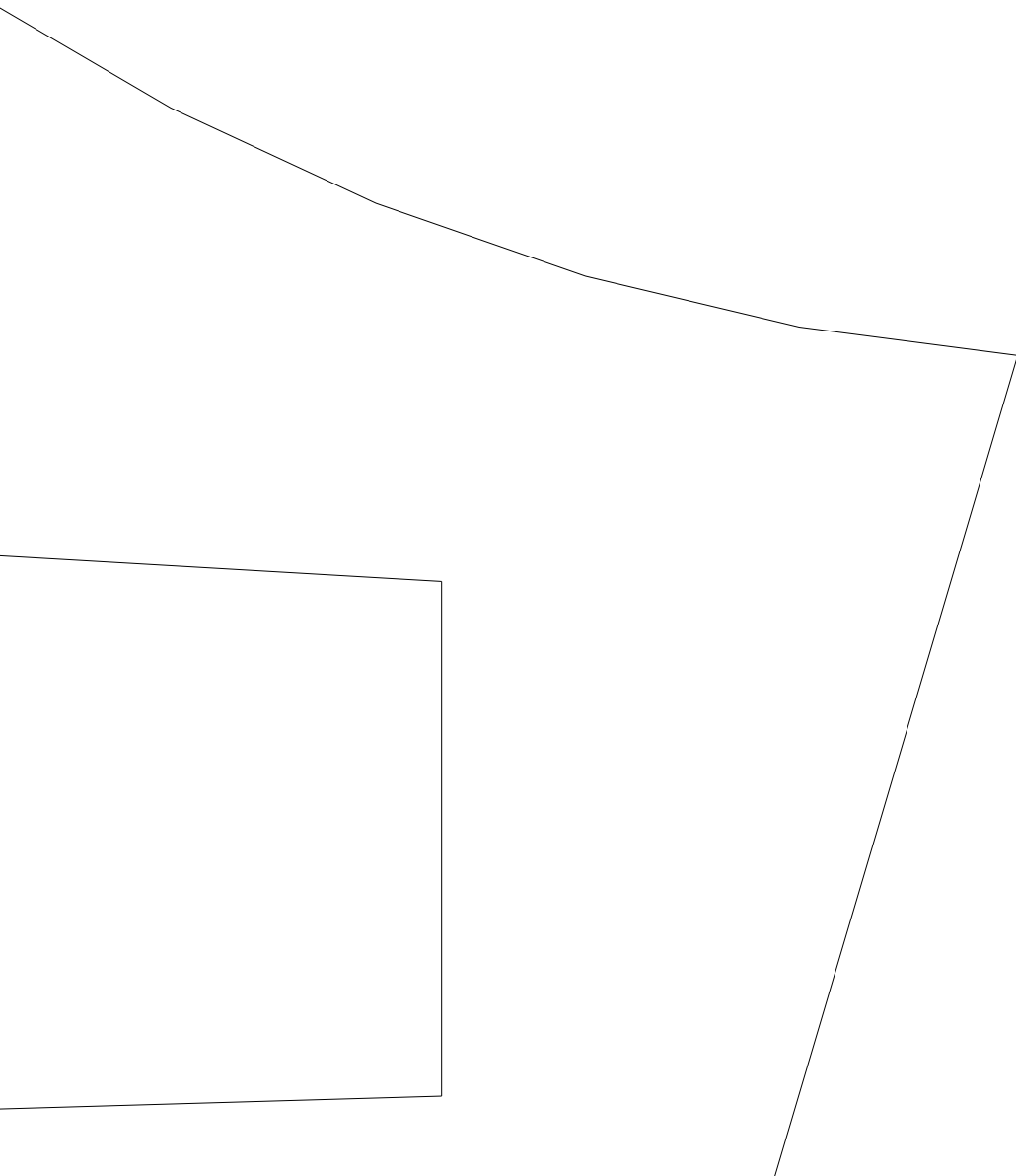


Position of

Position F2

Position F1

Position c







Aileron

Position of vertical stabiliser

op size)

## Position F1

Cut this section out for 7" prop (or match your own prop size)

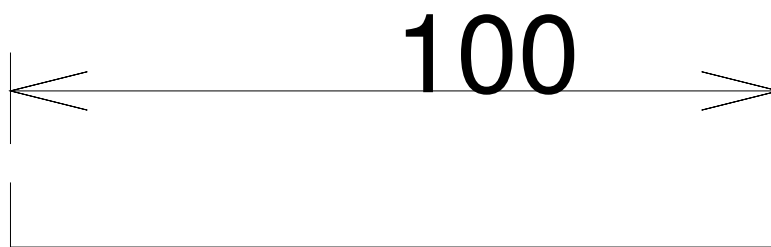
Elevator

Cut th

Position of vertical stabiliser

Aileron





100

A technical drawing showing a dimension line. The dimension line is a horizontal line with arrows at both ends pointing to vertical tick marks. Below the horizontal line is a U-shaped bracket. The number '100' is centered above the horizontal line.